

20 November 2020
Banking, Equity

Price **IDR. 4040**
Target Price **IDR. 4350**
JKSE Index **5580.88**



Stock Code **BBRI**
Bloomberg code **BBRI J**
Market cap (IDR.bn) **439,111.1B**
52-Week High (IDR) **4,760**
52-Week Low (IDR) **2,160**
6-m Avg Daily. Val (IDR) **3,128**
Free Float (%) **56.75**

Major Shareholders (%)
Government RI **56.75%**
Public **43.25%**

USD/IDR-YE
2019A **14,390**
2020F (6M Avg) **14,577**

Key Indicators
Non-Performing Loan (x) **2.53**
Net Interest Margin (x) **5.37**

Analyst: Lingga Pratiwi
Lingga.pratiwi@binaartha.com

Investment Consideration
Higher net profit

In 3Q20, BBRI recorded a net profit of 3.8 trillion, up by 102.8% QoQ, with growth coming from Net Interest Income which increased by 26% QoQ. PPOP rose 82% QoQ, due to a recovery in loan repayments and lower credit costs which are expected to decrease in the range of 3.2%. We estimate a Net Interest Margin of 5.7% by the end of the year.

Credit growth slowed

Loan growth slowed to 3.2% YoY. This slower growth was caused by the micro-segment which slowed to 8.9% YoY. Micro is still the main driver of credit growth. Consumers loans grew 3.8% YoY, Small Commercial 4.6% YoY, Medium -0.5% YoY, Non-BUMN Corporations 1.5% YoY, and BUMN -14.8% YoY. The ultra-micro segment experienced an increase from 3Q20 as there is a government loan subsidy for these loans, of IDR 10 million.

Lower Restructured loan target

As of September 30, 2020, BBRI has restructured loans worth IDR 193.7 trillion or 23% of total loans. The restructured loans came from the micro-segment, 40%, the small commercial segment 39%, and the corporate segment 8%. At the end of the year, BBRI expects the total amount of debt restructuring to reach IDR 200 trillion which is lower than the previous target of IDR 213 trillion, due to the economic recovery and the easing of the PSBB.

Valuation: 8%, Upside, Hold.

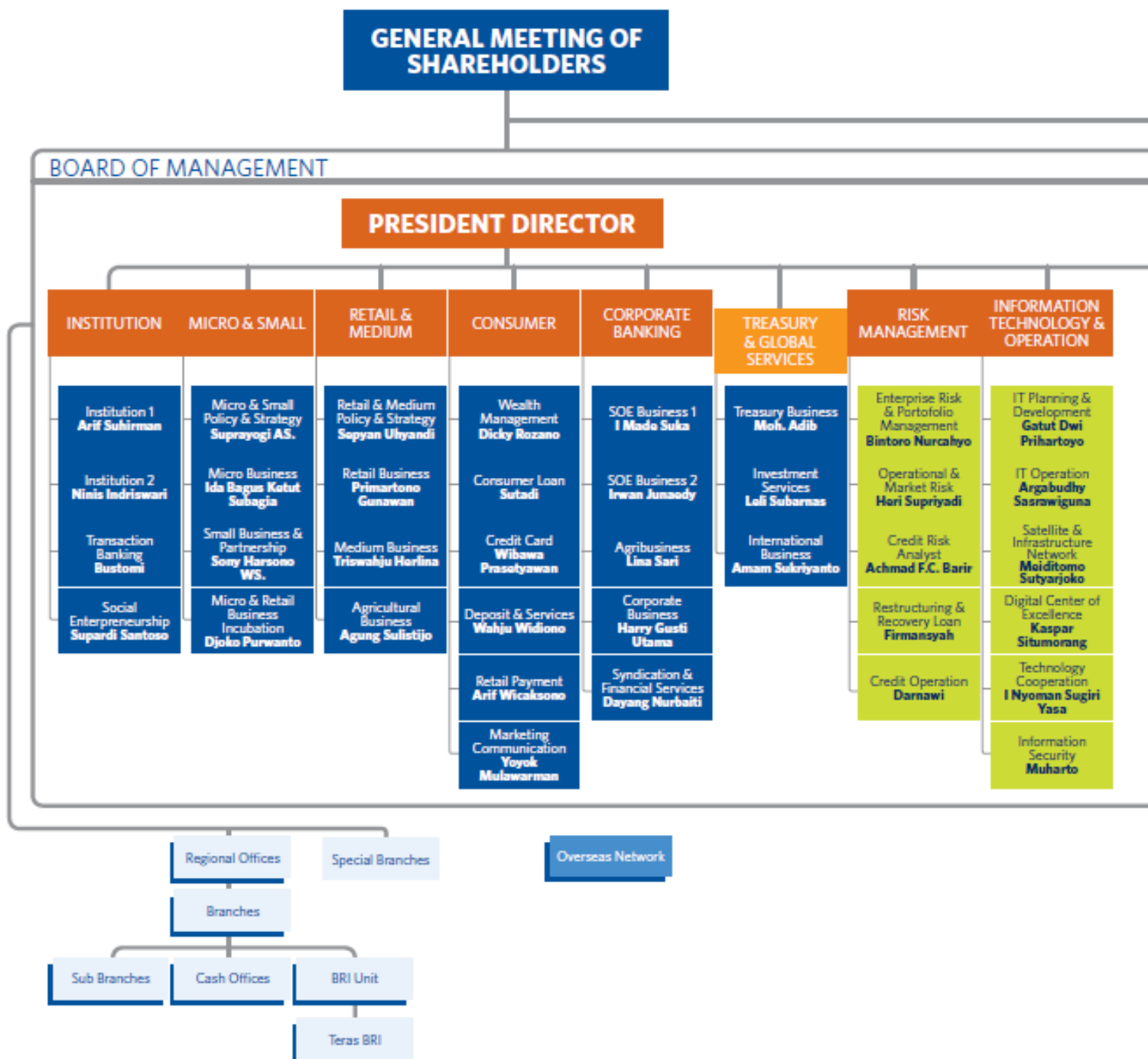
Based on our DDM Valuation, we have a target price within one year of IDR. 4350 or trading at 2.2x PBV which gives 8% potential upside, Hold.

Income Statement (Idr bn)	2017A	2018A	2019A	2020F	2021F	2022F
Interest Income	102.912	115.761	127.130	117.975	133.502	149.757
Interest Expense	-29.894	-37.150	-44.412	-40.358	-43.715	-49.218
Net Interest Income	73.018	78.611	82.718	77.617	89.787	100.539
Net Operating Income	19.271	23.425	28.439	25.215	28.439	32.026
Operating Expense	-38.614	-10.477	-11.131	-41.990	-21.936	-33.052
PPOP	53.675	60.047	66.192	57.142	69.977	76.382
Provision Expense	-17.254	-18.321	-22.760	-11.294	-19.383	-20.449
Operating Profit	36.421	41.726	43.432	45.848	50.594	55.933
Profit Before Tax	36.638	41.754	43.364	45.779	50.525	55.863
Tax Expense	7.978	9.335	8.950	7.782	8.589	9.497
Net Profit	28.660	32.418	34.414	37.997	41.936	46.366
EPS (Rp/Share)	232,0	264,7	281,0	310,2	342,4	378,5

Company Profile

PT Bank Rakyat Indonesia (Persero) Tbk (hereinafter referred to as “BRI”) was established and started its commercial operations on December 18, 1968. On April 29, 1992, based on Government of the Republic of Indonesia (the “Government”) Regulation No. 21 Year 1992, the legal status of BRI was changed to a limited liability corporation (Persero). BRI's scope of business is in the banking sector and the target is to optimize the utilization of BRI's resources to produce high quality and highly competitive services to gain benefits in order to increase the company value.

Company Structure



Source: Company

Chart: Gross Loan (x) YoY

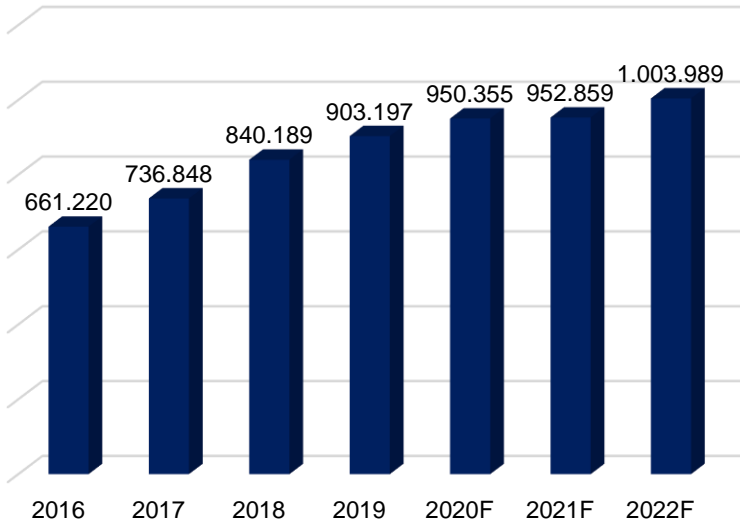


Chart: Customer Deposit (x) YoY

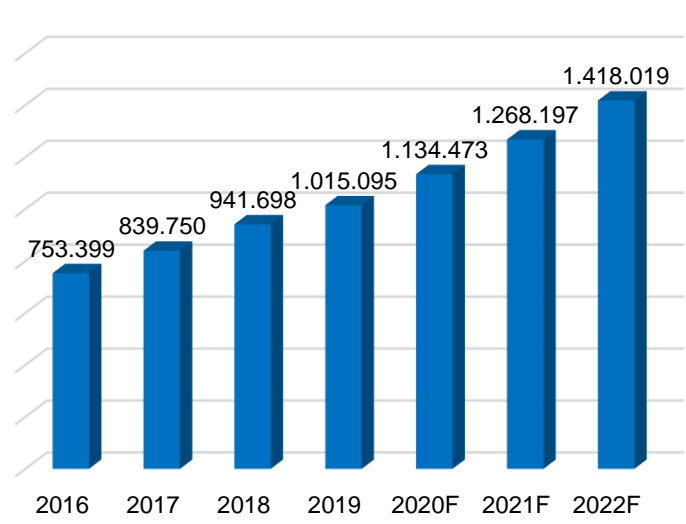


Chart: Profitability Ratio (x) YoY

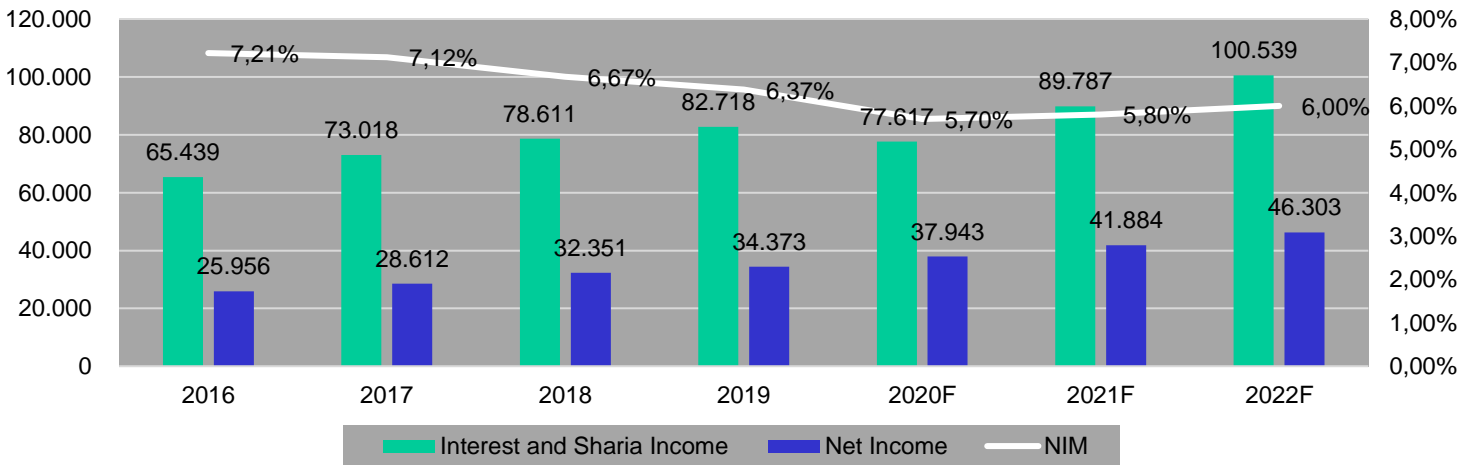


Chart: Net Interest Margin (x) YoY

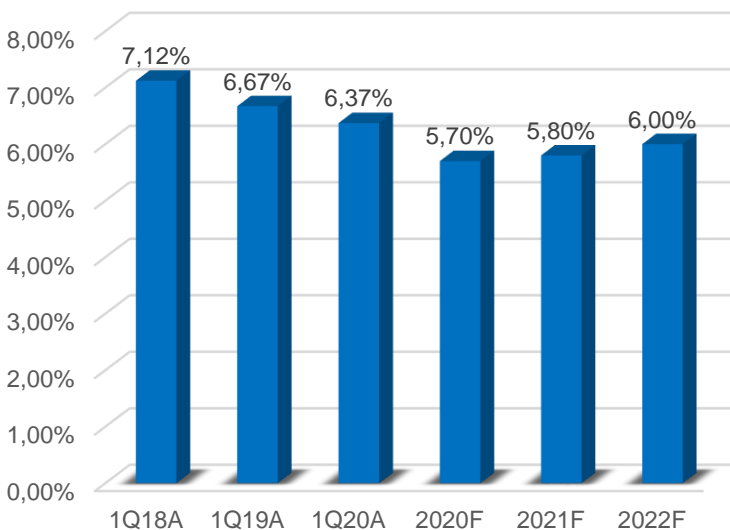


Chart: Loan to Deposit Ratio (x) YoY

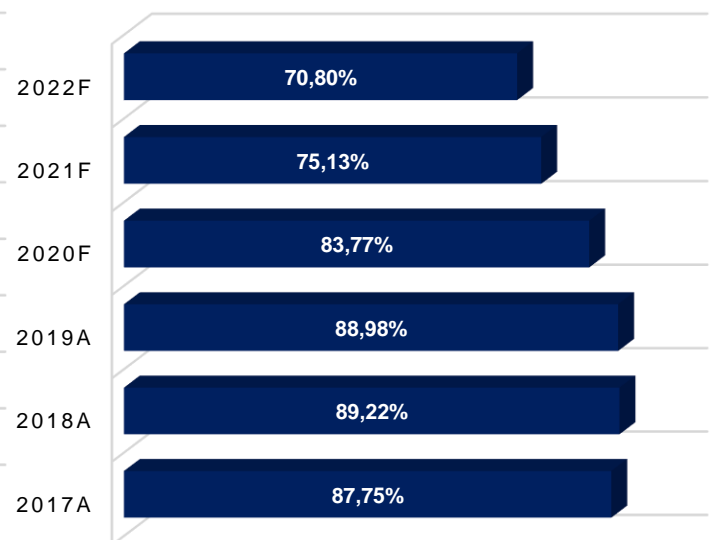


Chart: Gross Loan (x) QoQ

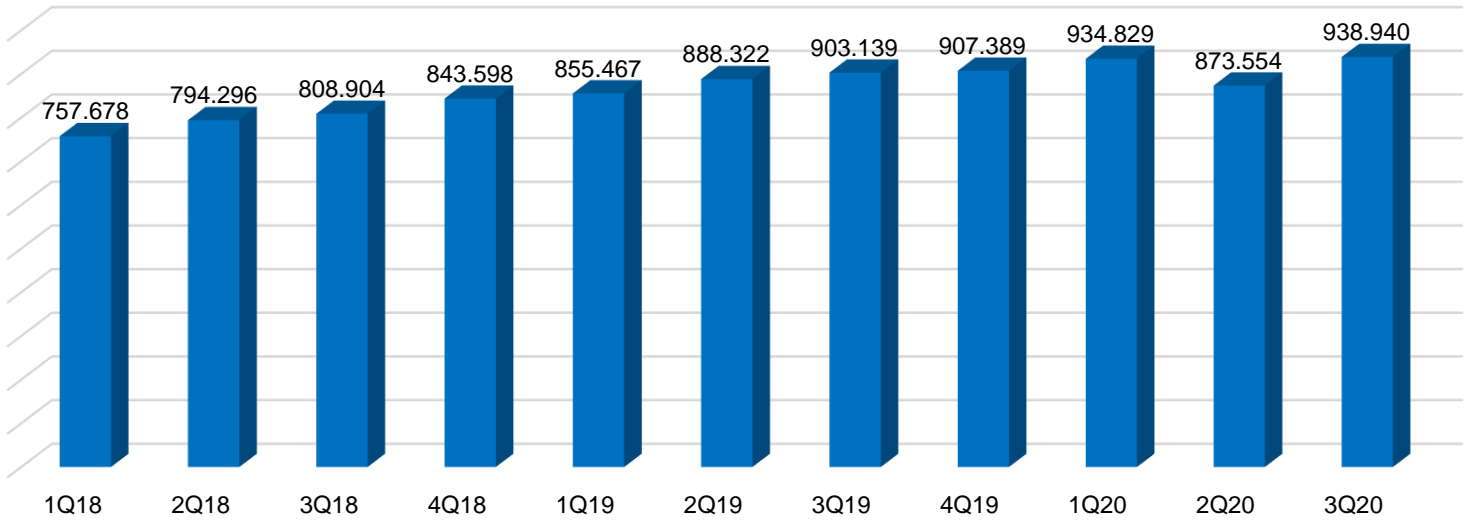


Chart: Net Income (x) QoQ

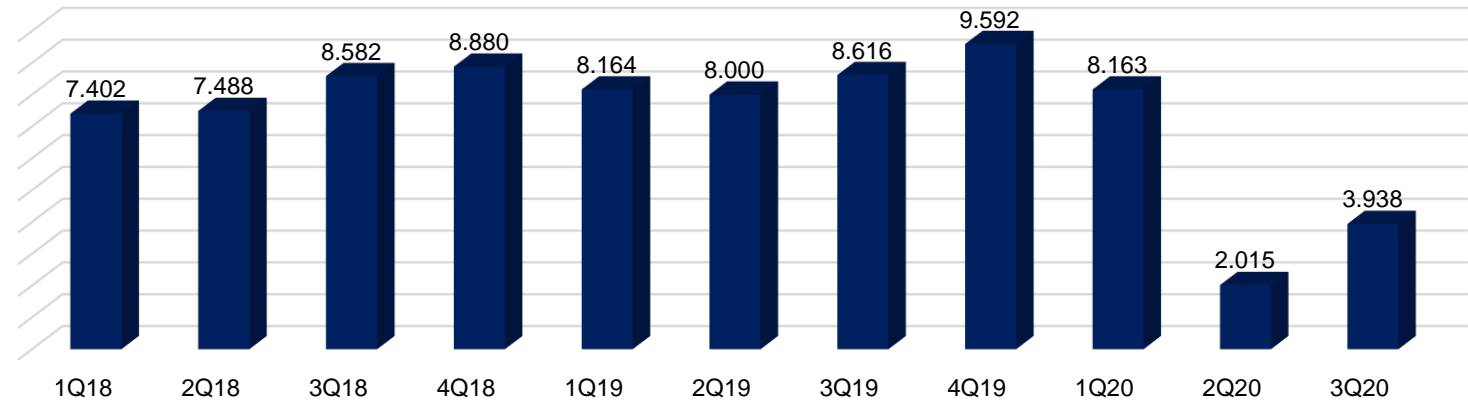
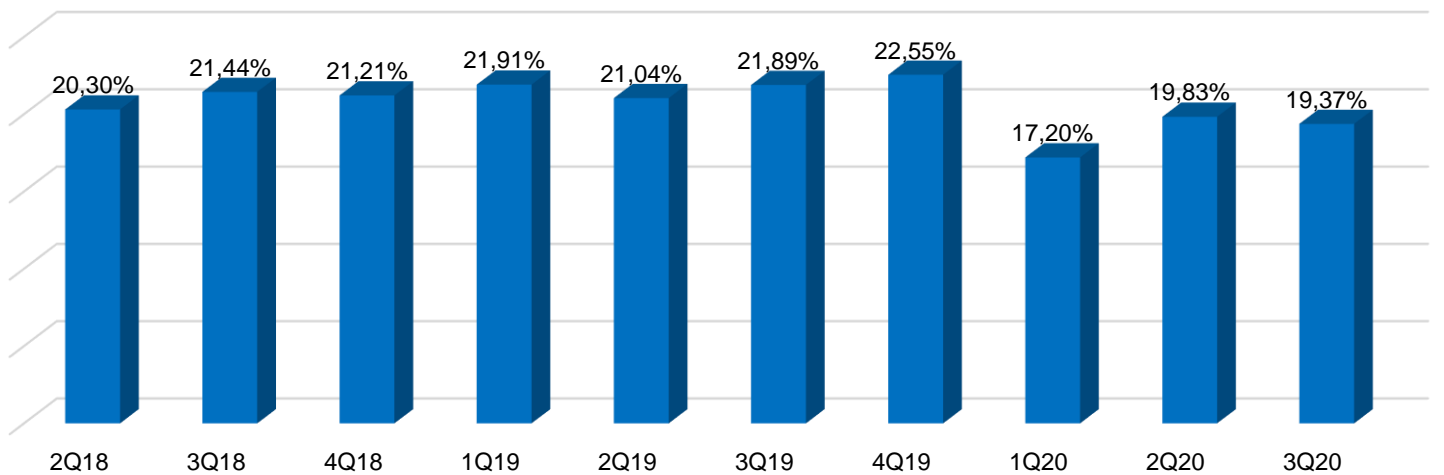


Chart: CAR (x) QoQ



Balance Sheet (IDR.bn)

Balance sheet (Idr bn)	2017A	2018A	2019A	2020F	2021F	2022F
Cash and CA with BI	82.954	98.581	101.636	96.491	83.701	69.945
Interbank Placement	55.157	87.018	116.855	131.562	171.106	210.128
Marketable Securities	186.939	184.284	195.840	275.590	380.347	467.088
Gross Loan	736.848	840.189	903.197	950.355	952.859	1.003.989
Allowance for Loans	-30.001	-35.515	-39.109	-33.500	-35.152	-36.911
Loans-net	706.847	804.673	864.089	916.855	917.707	967.078
Other Earning Asset	288.536	338.235	394.796	495.259	677.606	832.140
Non Earning Asset	49.111	55.409	56.239	65.304	72.149	82.097
Total Asset	1.127.447	1.296.898	1.416.759	1.573.909	1.751.163	1.951.260
Deposit:						
Current Account	145.529	178.098	168.826	182.332	196.919	212.672
Saving Account	349.441	387.180	414.333	464.052	519.739	582.107
Time Deposits	344.780	376.420	431.936	488.088	551.539	623.240
Other Interest Bearing Liabilities	104.340	152.958	171.869	200.969	234.996	274.783
Non Interest Bearing Liabilities	15.350	16.967	21.010	21.445	21.889	22.342
Total Liabilities	959.440	1.111.623	1.207.975	1.356.887	1.525.082	1.715.145
Total Shareholder's Equity	168.008	185.275	208.784	217.022	226.081	236.115

Income Statement (IDR.bn)

Income Statement (Idr bn)	2017A	2018A	2019A	2020F	2021F	2022F
Interest Income	102.912	115.761	127.130	117.975	133.502	149.757
Interest Expense	-29.894	-37.150	-44.412	-40.358	-43.715	-49.218
Net Interest Income	73.018	78.611	82.718	77.617	89.787	100.539
Net Operating Income	19.271	23.425	28.439	25.215	28.439	32.026
Operating Expense	-38.614	-10.477	-11.131	-41.990	-21.936	-33.052
Pre Provision Operating Profit	53.675	60.047	66.192	57.142	69.977	76.382
Provision Expense	-17.254	-18.321	-22.760	-11.294	-19.383	-20.449
Operating Profit	36.421	41.726	43.432	45.848	50.594	55.933
Profit Before Tax	36.638	41.754	43.364	45.779	50.525	55.863
Tax Expense	7.978	9.335	8.950	7.782	8.589	9.497
Net Profit	28.660	32.418	34.414	37.997	41.936	46.366
EPS (Rp/Share)	232,0	264,7	281,0	310,2	342,4	378,5

Ratio Highlights

Ratio Analysis	2017A	2018A	2019A	2020F	2021F	2022F
Profitability & Efficiency						
NIM	7,12%	6,67%	6,37%	5,70%	5,80%	6,00%
Cost-to-Income Ratio	41,84%	41,15%	40,45%	44,43%	40,81%	42,38%
ROE	17,11%	17,68%	16,66%	17,68%	18,73%	19,82%
ROA	2,54%	2,49%	2,43%	2,41%	2,39%	2,37%
ROAE		17,40%	17,17%	17,17%	18,21%	19,27%
BOPO	41,95%	43,70%	42,82%	52,21%	44,82%	46,73%
Cost of Credit	2,34%	2,18%	2,52%	3,20%	3,00%	3,20%
Liquidity						
LDR	87,75%	89,22%	88,98%	83,77%	75,13%	70,80%
CASA	58,94%	60,03%	57,45%	56,98%	56,51%	56,05%
Asset Quality						
Gross NPL	2,10%	2,15%	2,62%	2,53%	2,51%	2,50%
Provision Coverage	127,46%	137,12%	119,73%	120,78%	125,20%	130,05%
Capital						
CAR	22,96%	21,21%	22,55%	22,24%	22,00%	22,19%
Growth						
Loan Growth	11,44%	12,82%	7,61%	5,26%	5,31%	5,37%
Deposit Growth	11,46%	12,14%	7,79%	11,76%	11,79%	11,81%
Net Income Growth	10,23%	13,07%	6,25%	10,39%	10,39%	10,55%

BBRI QoQ Result

Balance Sheet	3Q19	2Q20	3Q20	%QoQ	%YoY
Loan	903.139	873.554	938.940	7,49%	3,96%
Loan Loss Reserves	-41.442	-1.043	-59.426	5599,70%	43,40%
NPL	857.200	869.000	880.700	1,35%	2,74%
Deposit					
Demand	169.388	178.528	229.184	28,37%	35,30%
Savings	384.016	12.347	438.914	3454,96%	14,30%
Time Deposit	403.369	473.941	463.830	-2,13%	14,99%
Total Asset	1.305.667	1.387.759	1.447.848	4,33%	10,89%
Shareholder Equity	197.107	185.419	192.216	3,67%	-2,48%

Income Statement	3Q19	2Q20	3Q20	%QoQ	%YoY
Interest Income	32.041	25.859	31.054	20,09%	-3,08%
Interest Expense	11.214	10.934	11.051	1,07%	-1,45%
Net Interest Income	20.827	14.924	20.002	34,03%	-3,96%
Net Operating Income	6.769	6.370	7.737	21,46%	14,30%
Operating Expense	11.116	12.610	13.314	5,59%	19,77%
PPOP	16.480	8.685	14.425	66,10%	-12,47%
Provision Expense	-5.301	-3.299	-9.504	188,13%	79,28%
Operating Profit	11.178	5.386	4.921	-8,64%	-55,98%
Profit Before Tax	11.196	5.384	4.871	-9,52%	-56,49%
Tax Expense	2.555	3.353	918	-72,61%	-64,06%
Net Profit	8.641	2.031	3.953	94,60%	-54,25%

Ratio	3Q19	2Q20	3Q20	%QoQ	%YoY
Profitability & Efficiency					
NIM	7,02%	5,72%	5,76%	0,04	(1,26)
ROE	19,16%	12,62%	11,43%	(1,19)	(7,73)
ROA	21,62%	11,33%	20,38%	9,05	(1,24)
CER	41,10%	50,23%	50,04%	(0,19)	8,94
Cost of Fund	3,63%	3,54%	3,45%	(0,09)	(0,18)
Liquidity					
LDR	93,07%	85,78%	82,58%	(3,20)	(10,49)
CASA	59,49%	56,64%	60,15%	3,51	0,66
RIM	92,73%	82,26%	80,05%	(2,21)	(12,68)
Asset Quality					
Gross NPL (Bank only)	2,96%	2,98%	3,02%	0,04	0,06
NPL Coverage Ratio	159,90%	200,30%	215,00%	14,70	55,10
Capital					
CAR	20,59%	18,81%	19,37%	0,56	(1,22)

Stock Ratings:

Buy: a recommendation to purchase the security with upside potential of 20% or greater

Hold: a recommendation to neither buy nor sell a security with upside potential of 0-19%.

Sell: a recommendation to close out a long position in a security with upside potential below 0% or negative.

**RESEARCH TEAM
(62-21) 520-6678 ext.612**

Disclaimer; PT Binaartha Sekuritas has compiled this report in good faith, using information believed to be reliable. PT Binaartha and its analyst take no responsibility for the accuracy of the information contained in this report. This report has been produced for distribution to clients of PT Binaartha Sekuritas only. This report is not an invitation to buy or sell any security. PT Binaartha Sekuritas may have used the information in this report prior to publication. The company or its clients may have positions in or may from time to time buy or sell the securities mentioned in this report or other related securities.