

**JAKARTA COMPOSITE INDEX (JCI): 4941.01 (+1.93%)**

Value: RG 12.0 T (NG 864.4 B); Foreign Net Buy 1.507 T

Maximum Daily Range (est): 4860.02 – 5056.16

Daily Signal  
"Forecast":



Published on Investing.com, 3/June/2020 - 9:56:06 GMT, Powered by TradingView.  
Jakarta Stock Exchange Composite Index, Indonesia, Jakarta:JKSE, D



**Commentary:** JCI chart surged 1.93% at level 4941.01 during the end of trading session on 3 June 2020. Based on the fibonacci retracement, the first and second support are ranging around level 4860.02 and 4891.47. Meanwhile, the first and second resistance are ranging around level 4993.27 and 5056.16. Based on the indicators, MACD, Stochastic and RSI are positive. In addition, a series of upward bar is still detected signifying bullish continuation. On the upside, JCI shall ascend to the resistance.

**Komentar:** IHSG berhasil ditutup menguat signifikan 1.93% di level 4941.01 pada 3 Juni 2020. Berdasarkan rasio fibonacci, support pertama maupun kedua memiliki range pada level 4860.02 hingga 4891.47. Sementara itu, resistance pertama maupun kedua memiliki range pada 4993.27 hingga 5056.16. Berdasarkan indikator, MACD, Stochastic maupun RSI menunjukkan sinyal positif. Di sisi lain, terlihat beberapa pola upward bar yang mengindikasikan adanya potensi bullish continuation pada pergerakan IHSG sehingga berpotensi menuju ke area resistance.

\*Analisa di atas dapat berubah dan akan dianalisa kembali (update) jika terjadi perubahan mendasar dari faktor teknis analisis.

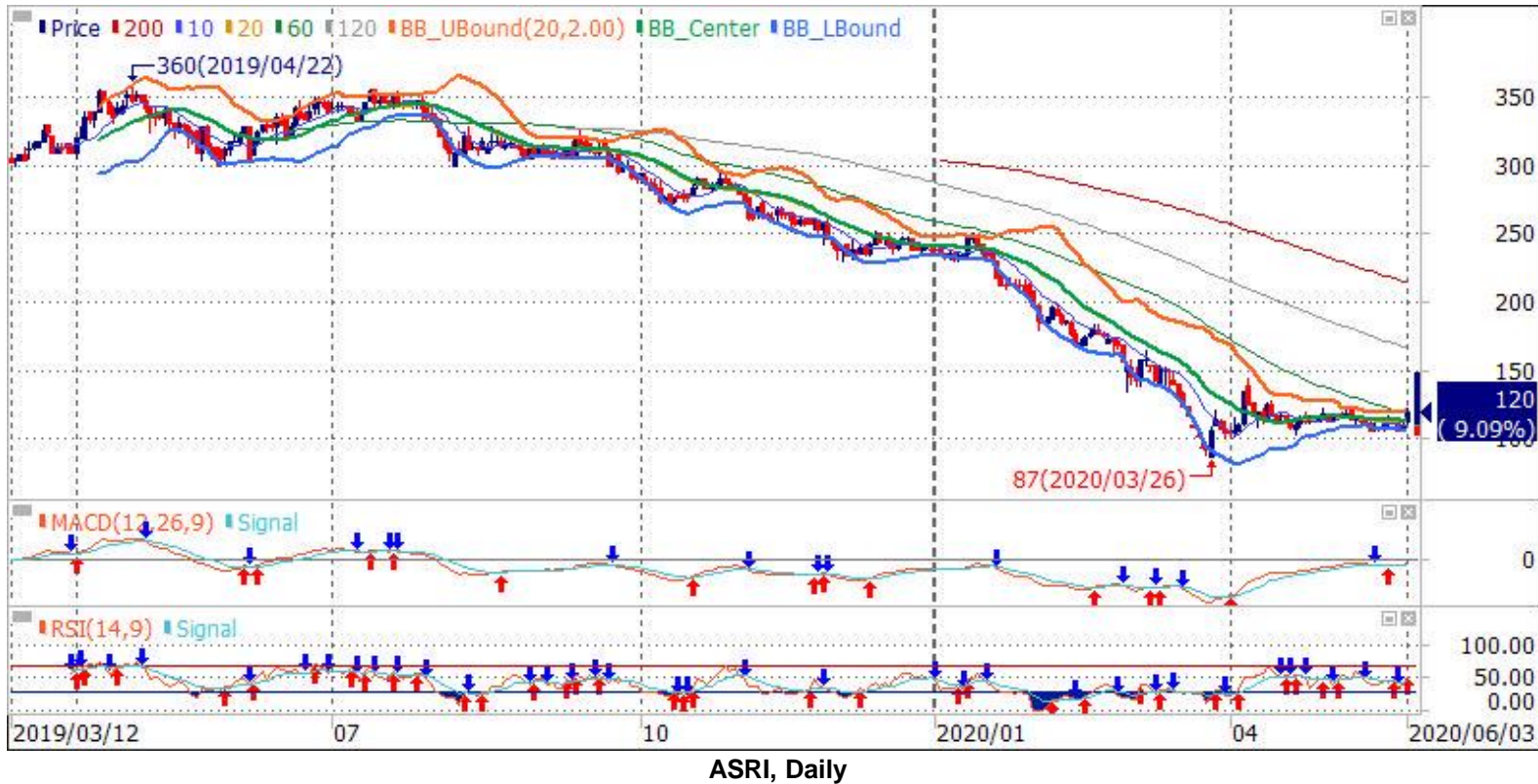
\*The analysis above may change and will be updated whenever there is a fundamental change from the technical analysis factor.



# PT. Alam Sutra Realty Tbk. (ASRI) 120

RoE: 8.65%; PER: 10.76x; EPS: 222.76; PBV: 0.93x; Beta: 1.98

**Recommendation: BUY**



**Commentary:** ASRI stock chart rose at level 120 during the end of trading session on 3 June 2020. An upward bar is detected signifying buying stimulus. **“Accumulative Buy”** around level 114 – 120 area, with target prices at level 123, 132 and 142

**Komentar:** ASRI ditutup menguat di level 120 pada 3 Juni 2020. Terlihat pola upward bar yang mengindikasikan adanya potensi stimulus beli pergerakan harga saham. **“Akumulasi Beli”** pada level 114 – 120, dengan target harga secara bertahap di level 123, 132 dan 142.

**Support:** 114 & 105.

**Short term target price(s) (1 day - 3 weeks):** 123, 132 & 142.

**Mid term target price(s) (3 weeks - 3 months):** -

**Long term target price(s) (3 months - 1 year):** -

Indicator:	Status:
MACD (12;26;9)	Buy
RSI (14)	Buy

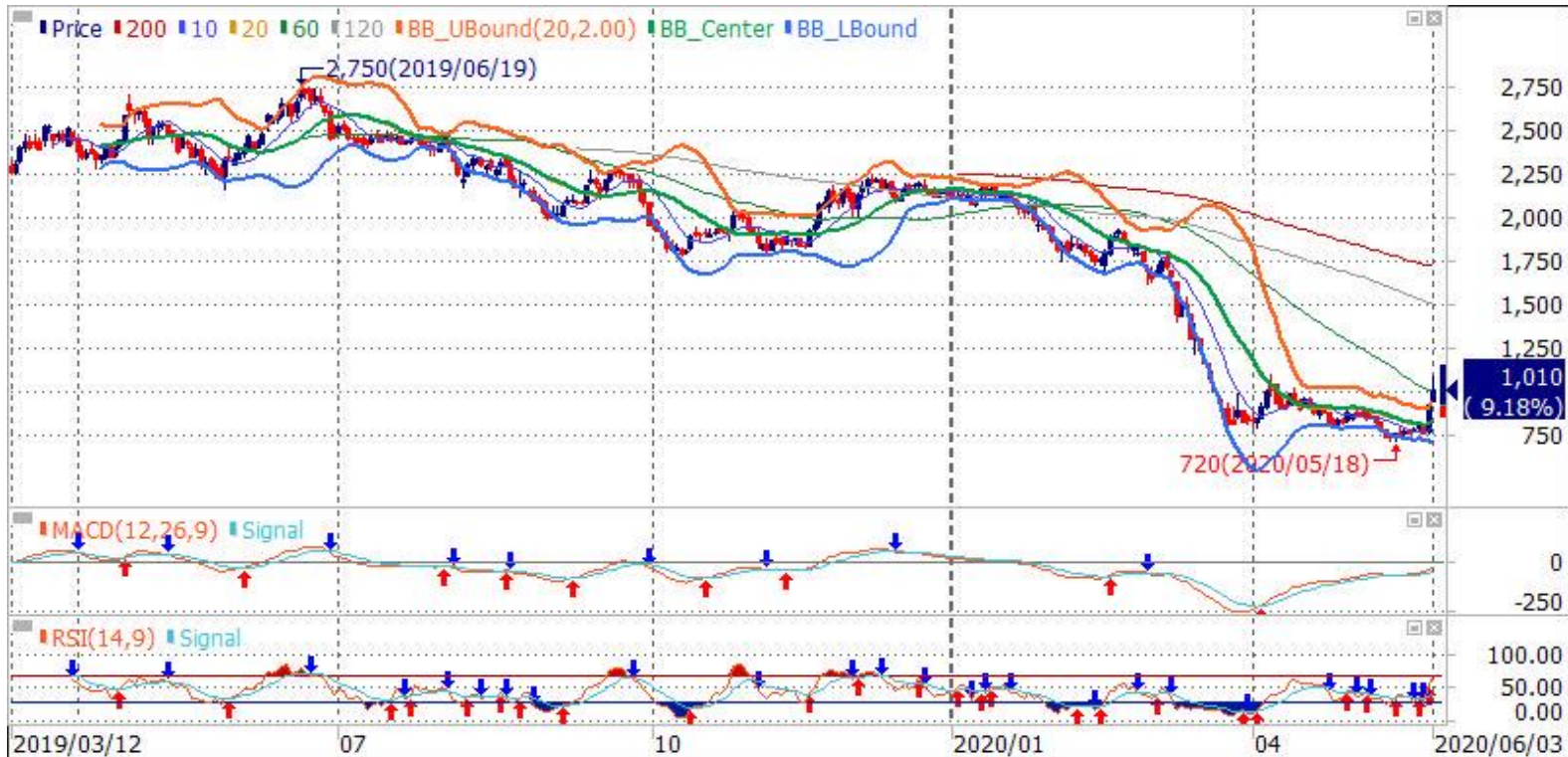
\*Analisa di atas dapat berubah dan akan dianalisa kembali (update) jika terjadi perubahan mendasar dari faktor teknis analisis.

\*The analysis above may change and will be updated whenever there is a fundamental change from the technical analysis factor.

# PT. Bank Tabungan Negara Tbk. (BBTN) 1010

Bank RoE: 10.86%; PER: 5.80x; EPS: 174.12; PBV: 0.59x; Beta: 2.03

**Recommendation: SELL ON STRENGTH**



BBTN, Daily

**Commentary:** BBTN stock chart rose at level 1010 during the end of trading session on 3 June 2020. All target prices at level 940, 970, 990 and 1080 were reached successfully. A shooting star candle is detected signifying profit taking. “Sell on strength” around level 1010 – 1090 area, with a target price at level 900.

**Komentar:** BBTN ditutup menguat di level 1010 pada 3 Juni 2020. Sebelumnya, adapun target harga pada level 840 dan 895 telah berhasil tercapai dengan baik. Terlihat pola shooting star candle yang mengindikasikan adanya potensi aksi profit taking pada pergerakan harga saham. “Sell on strength” pada area 1010 – 1090, dengan target harga di level 900.

**Support:** 900.

**Resistance:** 1250.

Indicator:	Status:
MACD (12;26;9)	Buy
RSI (14)	Buy

\*Analisa di atas dapat berubah dan akan dianalisa kembali (update) jika terjadi perubahan mendasar dari faktor teknis analisis.

\*The analysis above may change and will be updated whenever there is a fundamental change from the technical analysis factor.



# PT. Charoen Pokphand Indonesia Tbk. (CPIN) 6000

RoE: 16.26%; PER: 26.67x; EPS: 224.96; PBV: 4.34x; Beta: 1.05

**Recommendation: SELL ON STRENGTH**



**Commentary:** CPIN stock chart rose at level 6000 during the end of trading session on 3 June 2020. All target prices at level 4580, 4770, 4910 and 5500 were reached successfully. A shooting star candle is detected signifying profit taking. **“Sell on strength”** around level 6000 – 6400 area, with a target price at level 5325.

**Komentar:** CPIN ditutup menguat di level 6000 pada 3 Juni 2020. Sebelumnya, adapun seluruh target harga pada level 4580, 4770, 4910 dan 5500 telah berhasil tercapai dengan baik. Terlihat pola shooting star candle yang mengindikasikan adanya potensi aksi profit taking pada pergerakan harga saham. **“Sell on strength”** pada area level 6000 – 6400, dengan target harga di level 5325.

**Support: 5325.**

**Resistance: 6500.**

Indicator:	Status:
MACD (12;26;9)	Buy
RSI (14)	Overbought

\*Analisa di atas dapat berubah dan akan dianalisa kembali (update) jika terjadi perubahan mendasar dari faktor teknis analisis.

\*The analysis above may change and will be updated whenever there is a fundamental change from the technical analysis factor.

# PT. Indika Energy Tbk. (INDY) 705

RoE: -1.74%; PER: -14.52x; EPS: -48.55; PBV: 0.25; Beta: 1.85

**Recommendation: BUY**



**Commentary:** INDY stock chart rose at level 705 during the end of trading session on 3 June 2020. A target price at level 725 was reached successfully. A morning star candlestick pattern is detected signifying buying stimulus. “Accumulative Buy” around level 650 – 700 area, with target prices at level 725, 825, 1055 and 1285.

**Komentar:** INDY ditutup menguat di level 705 pada 3 Juni 2020. Adapun target harga pada level 725 telah berhasil tercapai dengan baik. Terlihat pola morning star candlestick pattern yang mengindikasikan adanya potensi stimulus beli pergerakan harga saham. “Akumulasi Beli” pada area level 650 – 700, dengan target harga secara bertahap di 725, 825, 1055 dan 1285.

**Support:** 650 & 595.

**Short term target price(s) (1 day - 3 weeks):** 725 & 825.

**Mid term target price(s) (3 weeks - 3 months):** 1055.

**Long term target price(s) (3 months - 1 year):** 1285.

Indicator:	Status:
MACD (12;26;9)	Neutral
RSI (14)	Neutral

\*Analisa di atas dapat berubah dan akan dianalisa kembali (update) jika terjadi perubahan mendasar dari faktor teknis analisis.

\*The analysis above may change and will be updated whenever there is a fundamental change from the technical analysis factor.



## PT. Mayora Indah Tbk. (MYOR) 2350

RoE: 32.27%; PER: 14.13x; EPS: 166.32; PBV: 4.55x; Beta: 0.21

MAYORA

**Recommendation: SELL ON STRENGTH**



**Commentary:** MYOR stock chart rose at level 2350 during the end of trading session on 3 June 2020. All target prices at level 1895, 1975, 2030 and 2270 were reached successfully. A hanging man candle is detected signifying selling stimulus. **“Sell on Strength”** around level 2350 – 2420 area, with a target price at level 2270.

**Komentar:** MYOR ditutup menguat di level 2350 pada 3 Juni 2020. Adapun seluruh target harga pada level 1895, 1975, 2030 dan 2270 telah berhasil tercapai dengan baik. Terlihat pola hanging man candle yang mengindikasikan adanya potensi tekanan jual pada pergerakan harga saham. **“Sell on Strength”** pada area level 2350 – 2420, dengan target harga di level 2270.

**Support:** 2270.

**Resistance:** 2520.

Indicator:	Status:
MACD (12;26;9)	Buy
RSI (14)	Overbought

\*Analisa di atas dapat berubah dan akan dianalisa kembali (update) jika terjadi perubahan mendasar dari faktor teknis analisis.

\*The analysis above may change and will be updated whenever there is a fundamental change from the technical analysis factor.

## STOCK RECOMMENDATION UPDATES

Stock	Date	Buy Area	Target Profit	Protection	Status
AAAI	29/4/2020	5700 – 6000	6225, 6775 and 7350	Switch to 7350	Take Profit at Market Price
ADHI	3/6/2020	510 – 520	530, 545, 565, 610 and 655	Switch to 530	Hold/ Maintain Buy
ADRO	18/5/2020	900 – 930	960 and 1210	Switch to 960	Hold/ Maintain Buy
ANTM	8/5/2020	490 – 500	555 and 760	Switch to 555	Hold/ Maintain Buy
AKRA	26/5/2020	2160 – 2220	2320, 2630 and 2940	Switch to 2320	Hold/ Maintain Buy
APLN	2/6/2020	96 – 99	103, 108, 119 and 130	Switch to 108	Hold/ Maintain Buy
ASII	5/5/2020	3600 – 3620	4000, 4450, 4760 and 6100	Switch to 4760	Hold/ Maintain Buy
AUTO	7/4/2020	780 – 840	885, 980, 1055, 1105 and 1325	715	Hold/ Maintain Buy
BBNI	20/5/2020	3380 – 3520	3860, 4470, 4890 and 6675	Switch to 3860	Hold/ Maintain Buy
BBTN	3/6/2020	900 – 925	940, 970, 990 and 1080	Switch to 1080	Hold/ Maintain Buy
BEEF	18/5/2020	204 - 210	232, 252, 266 and 326	176	Hold/ Maintain Buy
BJTM	31/3/2020	408 – 438	478, 505, 525, 540 and 600	Switch to 540	Hold/ Maintain Buy
BNGA	28/5/2020	600 – 625	670, 710 and 750	Switch to 710	Hold/ Maintain Buy
BSDE	11/5/2020	660 – 670	760, 835, 890 and 1120	Switch to 790	Hold/ Maintain Buy
BWPT	2/6/2020	75 – 78	82, 87, 98 and 109	Switch to 82	Hold/ Maintain Buy
CPIN	8/5/2020	4200 – 4300	4580, 4770, 4910 and 5500	Switch to 5500	Take Profit at Market Price
CTRA	5/5/2020	505 – 515	585, 640 and 870	Switch to 640	Hold/ Maintain Buy
DOID	2/6/2020	123 - 126	129, 146, 163 and 180	Switch to 129	Hold/ Maintain Buy
ELSA	29/5/2020	196 – 198	212, 228 and 290	Switch to 212	Hold/ Maintain Buy
ERAA	18/5/2020	1075 – 1100	1125, 1155, 1260, 1370 and 1475	Switch to 1260	Hold/ Maintain Buy
EXCL	13/5/2020	2220 - 2290	2340, 2580, 2820 and 3050	Switch to 2580	Hold/ Maintain Buy
GGRM	28/4/2020	42500 - 43500	44575, 48700 and 66125	Switch to 48700	Hold/ Maintain Buy
GIAA	15/5/2020	210 – 230	250, 264, 274 dan 320	Switch to 250	Hold/ Maintain Buy
GMFI	19/5/2020	74 - 76	78, 87, 96 dan 105	Switch to 78	Hold/ Maintain Buy

## STOCK RECOMMENDATION UPDATES

Stock	Date	Buy Area	Target Profit	Protection	Status
HMSP	5/5/2020	1490 – 1520	1660, 1820, 2190 and 2550	Switch to 1820	Hold/ Maintain Buy
HOKI	18/5/2020	645 – 670	685, 720, 750, 770 and 850	Switch to 685	Hold/ Maintain Buy
ICBP	29/5/2020	7750 – 8325	8675, 8950 and 10150	Switch to 8675	Hold/ Maintain Buy
IPCC	24/3/2020	224 – 234	404, 530, 620 and 1000	61	Hold/ Maintain Buy
IMAS	7/4/2020	450 - 550	640, 710, 760 and 970	390	Hold
INKP	27/5/2020	4920 – 5125	5325 and 5950	Switch to 5950	Take Profit at Market Price
INTP	29/4/2020	10400 – 10600	11725, 12925, 13850, 14525 and 17300	Switch to 13850	Hold/ Maintain Buy
ISAT	13/5/2020	1990 – 2010	2080, 2320, 2880 and 3450	Switch to 2080	Hold/ Maintain Buy
ITMG	15/5/2020	7500 – 7550	7850, 8275 and 10050	Switch to 8275	Hold/ Maintain Buy
JPFA	27/4/2020	865 – 895	970, 1065, 1140, 1190 and 1415	Switch to 1190	Hold/ Maintain Buy
KLBF	30/3/2020	970 – 1010	1045, 1070, 1090 and 1175	Switch to 1175	Take Profit at Market Price
LPCK	19/5/2020	610 – 620	655, 730, 905 and 1080	Switch to 730	Hold/ Maintain Buy
LPKR	11/5/2020	140 - 145	151, 166, 179, 187 and 224	Switch to 187	Hold/ Maintain Buy
LPPF	20/5/2020	1300 – 1330	1370, 1430, 1505, 1685 and 1865	Switch to 1505	Hold/ Maintain Buy
LSIP	29/5/2020	695 – 715	755 and 1000	Switch to 755	Hold/ Maintain Buy
MAIN	29/5/2020	500 – 520	545, 565, 650, 735 and 820	Switch to 650	Hold/ Maintain Buy
MAPI	15/4/2020	520 - 530	575, 640, 690, 730 and 880	Switch to 730	Hold/ Maintain Buy
MEDC	3/6/2020	444 – 452	472, 494, 525, 595 and 665	Switch to 472	Hold/ Maintain Buy
MYOR	3/4/2020	1710 - 1810	1895, 1975, 2030 and 2270	Switch to 2270	Take Profit at Market Price
PGAS	2/6/2020	840 – 860	880, 920, 1015 and 1110	Switch to 920	Hold/ Maintain Buy
PNLF	15/1/2020	276 - 280	284, 306, 330 and 352	Switch to 284	Hold
PTBA	2/6/2020	1925 – 1945	1985, 2040, 2120, 2300 and 2470	Switch to 2120	Hold/ Maintain Buy



## STOCK RECOMMENDATION UPDATES

Stock	Date	Buy Area	Target Profit	Protection	Status
PWON	29/5/2020	370 – 376	390, 410, 438, 500 and 565	Switch to 410	Hold/ Maintain Buy
RALS	2/6/2020	560 – 570	585, 605, 685, 765 and 845	Switch to 605	Hold/ Maintain Buy
SCMA	6/5/2020	760 – 790	825, 885 and 1130	Switch to 885	Hold/ Maintain Buy
SMGR	16/4/2020	6950 – 7150	7650, 8275, 8775, 9125 and 10575	Switch to 9125	Hold/ Maintain Buy
SMRA	20/3/2020	490 – 494	610, 680, 730 and 935	362	Hold/ Maintain Buy
SRIL	27/5/2020	145 – 147	149, 157, 163, 178 and 192	Switch to 157	Hold/ Maintain Buy
TBIG	30/3/2020	825 – 875	920, 955, 975 and 1070	Switch to 1070	Take Profit at Market Price
TKIM	28/5/2020	4300 – 4420	4580, 4800, 5325 and 5850	Switch to 4800	Hold/ Maintain Buy
TLKM	28/5/2020	3120 – 3170	3250, 3500, 3750 and 4000	Switch to 3250	Hold/ Maintain Buy
UNTR	19/5/2020	13550 – 14150	14625, 15425, 18850, 22275 and 25700	Switch to 15425	Hold/ Maintain Buy
UNVR	22/4/2020	6800 - 7000	7200, 7725, 8950 dan 10175	Switch to 7725	Hold/ Maintain Buy
WEGE	20/5/2020	150 – 154	158, 180, 202 and 224	Switch to 158	Hold/ Maintain Buy
WIKA	24/3/2020	750 - 775	955, 1100, 1205 and 1635	Switch to 1205	Hold/ Maintain Buy
WSBP	7/4/2020	143 – 173	200, 230, 250 and 336	121	Hold/ Maintain Buy
WSKT	7/4/2020	515 - 635	775, 910, 1010 and 1415	410	Hold/ Maintain Buy

### Indicators

- *MACD (Moving Average Convergence Divergence)*: momentum indicator.
- *RSI (Relative Strength Index)*: compares the magnitude of recent gains to recent losses in attempt to determine 'overbought' and 'oversold' conditions of the asset.
- *Stochastic*: technical momentum indicator that compares a currency pair's closing price to its price range over a given time period.

## **RESEARCH TEAM**

**(62-21) 520-6678 ext. 610 / 612**

**Disclaimer:** *PT Binaartha Sekuritas has compiled this report in good faith, using information believed to be reliable. PT Binaartha Sekuritas and its analyst take no responsibility for the accuracy of the information contained in this report. This report has been produced for distribution to clients of PT Binaartha Sekuritas only. This report is not an invitation to buy or sell any security. PT Binaartha Sekuritas may have used the information in this report prior to publication. The company or its clients may have positions in or may from time to time buy or sell the securities mentioned in this report or other related securities.*