

JAKARTA COMPOSITE INDEX (JCI): 4548.66 (+0.83%)

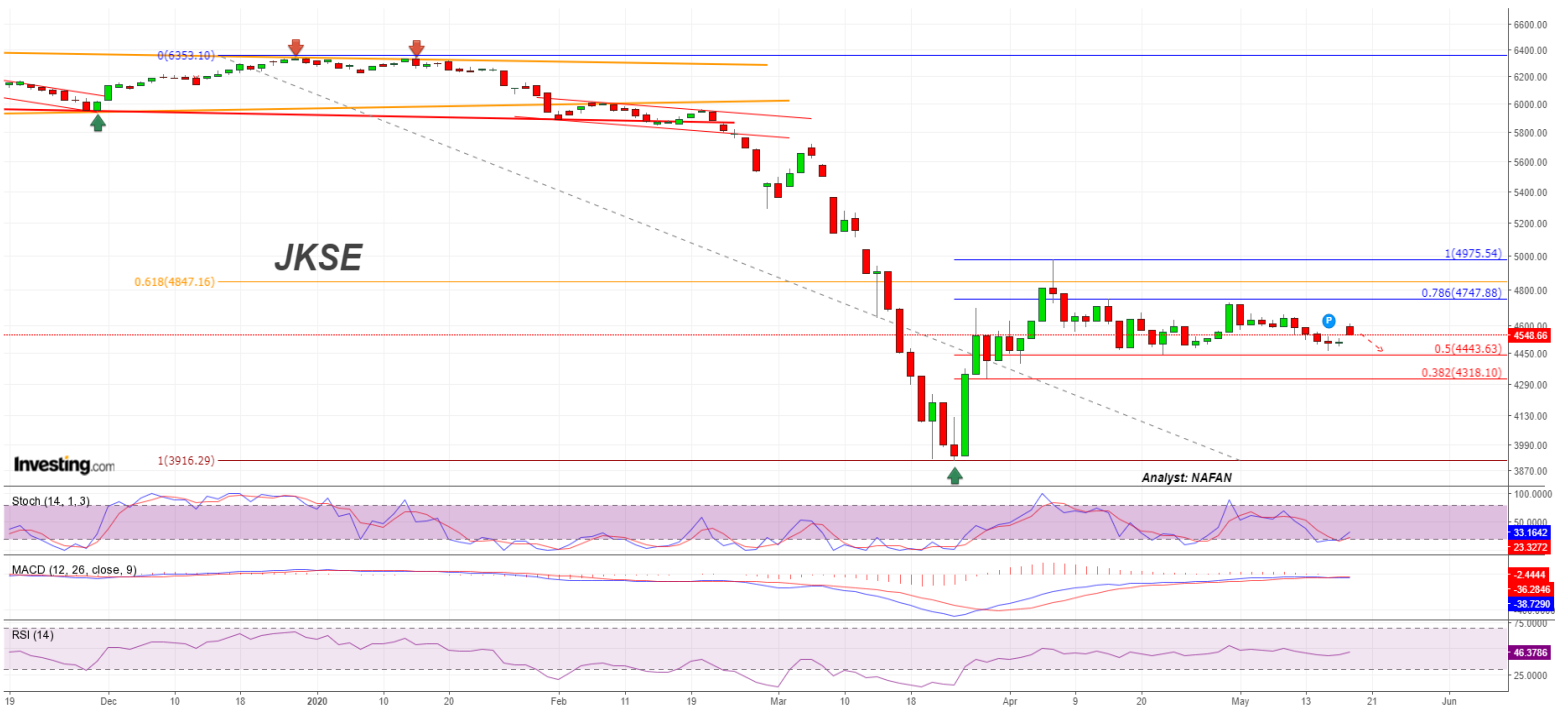
Value: RG 6.1 T (NG 2.5 T); Foreign Net Sell 2.076 T

Minimum Daily Range (est): 4443.63 – 4747.88

Daily Signal
"Forecast":



Published on Investing.com, 19/May/2020 - 9:16:25 GMT, Powered by TradingView.
Jakarta Stock Exchange Composite Index, Indonesia, Jakarta:JKSE, D



JCI, Daily

Commentary: JCI chart surged 0.83% at level 4548.66 during the end of trading session on 19 May 2020. Based on the fibonacci retracement, the first and second support are ranging around level 4443.63 and 4318.10. Meanwhile, the first and second resistance are ranging around level 4747.88 and 4975.54. Based on the indicator, MACD is forming a dead cross at the negative area. Meanwhile, Stochastic and RSI are neutral. In addition, a black closing bozu candle is detected signifying correction.

Komentar: IHSG berhasil ditutup menguat signifikan 0.83% di level 4548.66 pada 19 Mei 2020. Berdasarkan rasio fibonacci, support pertama maupun kedua memiliki range pada level 4443.63 hingga 4318.10. Sementara itu, resistance pertama maupun kedua memiliki range pada 4747.88 hingga 4975.54. Berdasarkan indikator, MACD telah membentuk pola dead cross di area negatif. Sementara itu, Stochastic dan RSI berada di area netral. Di sisi lain, terlihat pola black closing bozu candle yang mengindikasikan adanya potensi koreksi wajar pada pergerakan IHSG.

*Analisa di atas dapat berubah dan akan dianalisa kembali (update) jika terjadi perubahan mendasar dari faktor teknis analisis.

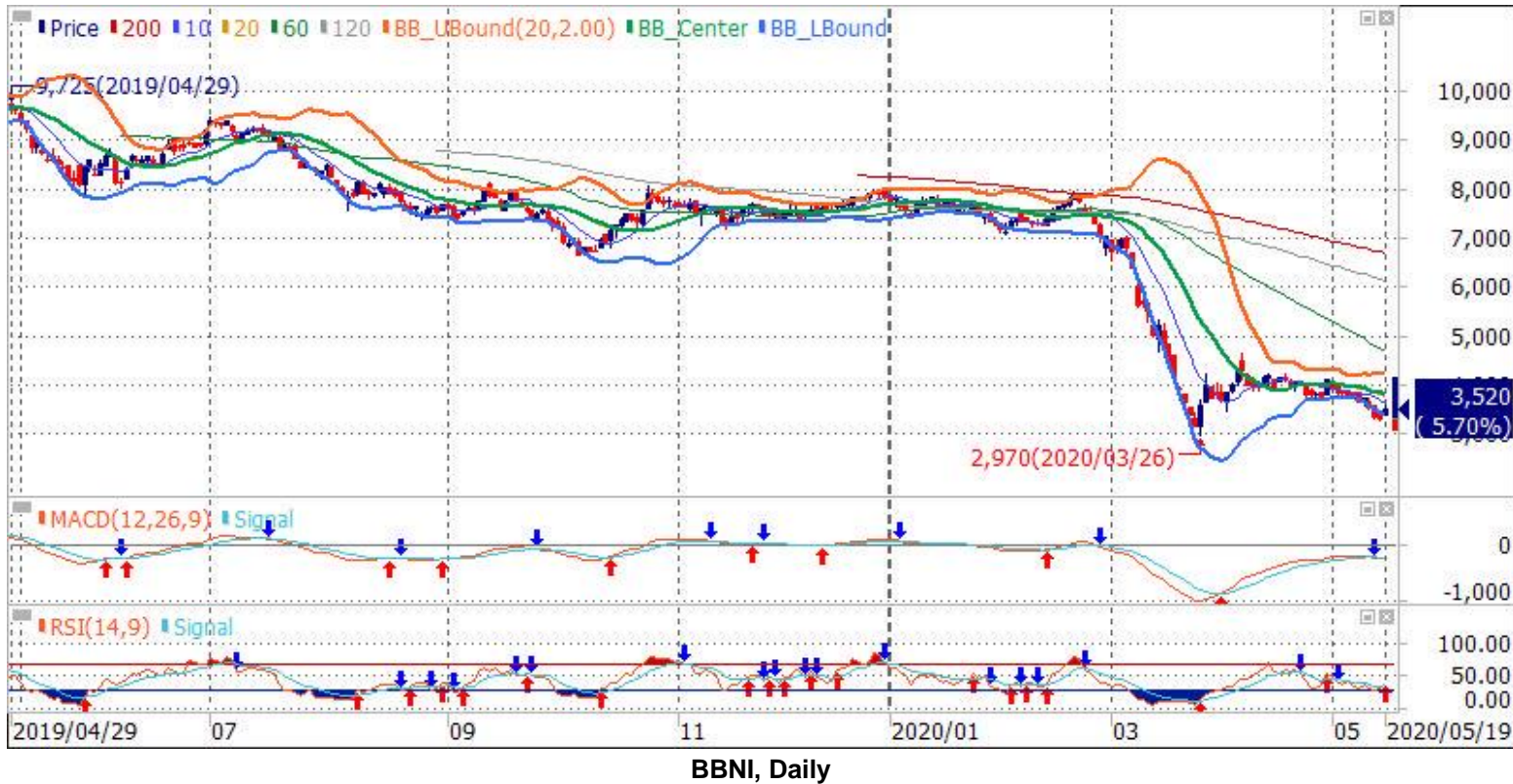
*The analysis above may change and will be updated whenever there is a fundamental change from the technical analysis factor.



PT. Bank Negara Indonesia Tbk. (BBNI) 3520

RoE: 12.31%; PER: 4.28; EPS: 831.59; PBV: 0.53; Beta: 2.08

Recommendation: BUY



Commentary: BBNI stock chart rose at level 3520 during the end of trading session on 19 May 2020. The price is above the lower band of the bollinger and a morning star candlestick pattern is detected signifying buying stimulus.

“Accumulative Buy” around level 3380 – 3520 area, with target prices at level 3860, 4470, 4890 and 6675.

Komentar: BBNI ditutup menguat di level 3550 pada 19 Mei 2020. Pergerakan harga masih bertahan di atas garis bawah dari bollinger dan terlihat pola morning star candlestick pattern yang mengindikasikan adanya potensi stimulus beli. **“Akumulasi Beli”** pada area 3380 – 3520, dengan target harga di level 3860, 4470, 4890 dan 6675.

Support: 3100.

Short term target price(s) (1 day - 3 weeks): 3860.

Mid term target price(s) (3 weeks - 3 months): 4470 & 4890.

Long term target price(s) (3 months - 1 year): 6675.

Indicator:	Status:
MACD (12;26;9)	Neutral
RSI (14)	Buy

*Analisa di atas dapat berubah dan akan dianalisa kembali (update) jika terjadi perubahan mendasar dari faktor teknis analisis.

*The analysis above may change and will be updated whenever there is a fundamental change from the technical analysis factor.

PT. Bank CIMB Niaga Tbk. (BNGA) 620

RoE: 10.34%; PER: 3.66x; EPS: 169.52; PBV: 0.38x; Beta: 1.83

Recommendation: BUY



BNGA, Daily

Commentary: BNGA stock chart rose at level 620 during the end of trading session on on 19 May 2020. A target price at level 670 was reached successfully. The price is above the lower band of the bollinger and a morning star candlestick pattern is detected signifying buying stimulus. **“Accumulative Buy”** around level 600 – 620 area, with target prices at level 670, 710 and 750.

Komentar: BNGA ditutup menguat di level 620 pada 19 Mei 2020. *Sebelumnya, adapun target harga pada level 670 berhasil tercapai dengan baik.* Pergerakan harga masih bertahan di atas garis bawah dari bollinger dan terlihat pola morning star candlestick pattern yang mengindikasikan adanya potensi stimulus beli. **“Akumulasi Beli”** pada area 600 – 620, dengan target harga secara bertahap di level 670, 710 dan 750.

Support: 590.

Short term target price(s) (1 day - 3 weeks): 670, 710 & 750.

Mid term target price(s) (3 weeks - 3 months): -

Long term target price(s) (3 months - 1 year): -

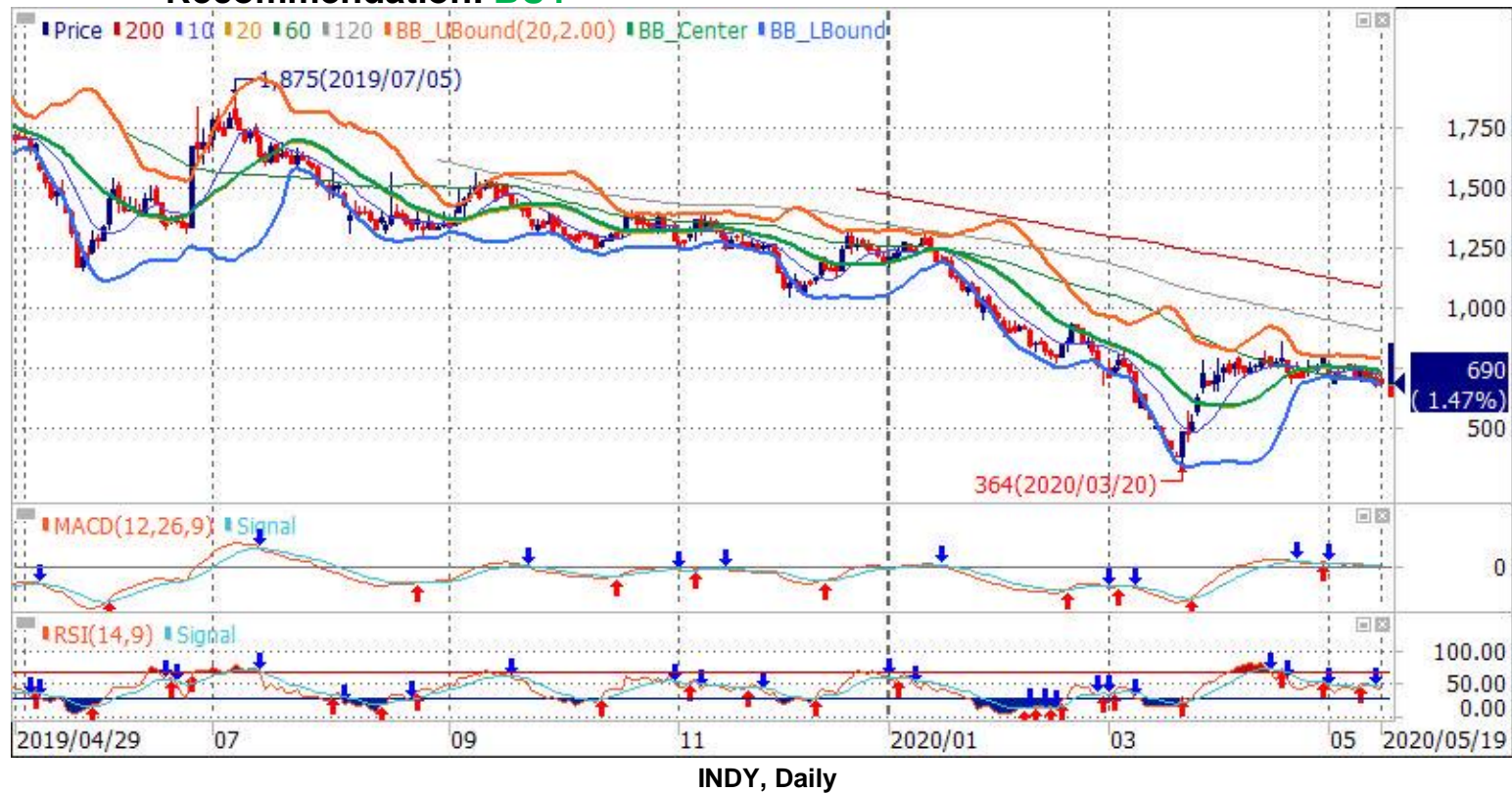
Indicator:	Status:
MACD (12;26;9)	Neutral
RSI (14)	Buy

*Analisa di atas dapat berubah dan akan dianalisa kembali (update) jika terjadi perubahan mendasar dari faktor teknis analisis.

*The analysis above may change and will be updated whenever there is a fundamental change from the technical analysis factor.

PT. Indika Energy Tbk. (INDY) 690

RoE: -1.74%; PER: -14.21x; EPS: -48.55; PBV: 0.25; Beta: 1.97

Recommendation: BUY

Commentary: INDY stock chart rose at level 690 during the end of trading session on 19 May 2020. A target price at level 740 was reached successfully. A bullish homing pigeon candlestick pattern is detected signifying buying stimulus. “Accumulative Buy” around level 670 – 690 area, with target prices at level 725, 825, 1055 and 1285.

Komentar: INDY ditutup menguat di level 690 pada 19 Mei 2020. Adapun target harga pada level 740 telah berhasil tercapai dengan baik. Terlihat pola bullish homing pigeon candlestick pattern yang mengindikasikan adanya potensi stimulus beli pergerakan harga saham. “Akumulasi Beli” pada area level 670 – 690, dengan target harga secara bertahap di 725, 825, 1055 dan 1285.

Support: 650 & 595.

Short term target price(s) (1 day - 3 weeks): 725 & 825.

Mid term target price(s) (3 weeks - 3 months): 1055.

Long term target price(s) (3 months - 1 year): 1285.

Indicator:	Status:
MACD (12;26;9)	Neutral
RSI (14)	Neutral



PT. Matahari Department Store Tbk. (LPPF) 1330

RoE: 78.26%; PER: 2.72x; EPS: 488.17; PBV: 2.14x; Beta: 1.75

Recommendation: BUY



Commentary: LPPF stock chart fell at level 1330 during the end of trading session on 19 May 2020. A target price at level 1370 was reached successfully. Since the price has retested the MAs 10 and 20, it will eventually ascend to the nearest resistance at first, on the upside. **“Accumulative Buy”** around level 1300 – 1330 area, with target prices at level 1370, 1430, 1505, 1685 and 1865.

Komentar: LPPF ditutup melemah di level 1330 pada 19 Mei 2020. Adapun target harga pada level 1370 telah berhasil tercapai dengan baik. Pergerakan harga saham telah menguji beberapa garis MA 10 maupun MA 20 sehingga peluang terjadinya penguatan minimal menuju ke level resistance pertama masih terbuka lebar. **“Akumulasi Beli”** pada area level 1300 – 1330, dengan target harga secara bertahap di level level 1370, 1430, 1505, 1685 dan 1865.

Support: 1230 & 1145.

Short term target price(s) (1 day - 3 weeks): 1370, 1430 & 1505.

Mid term target price(s) (3 weeks - 3 months): 1685 & 1865.

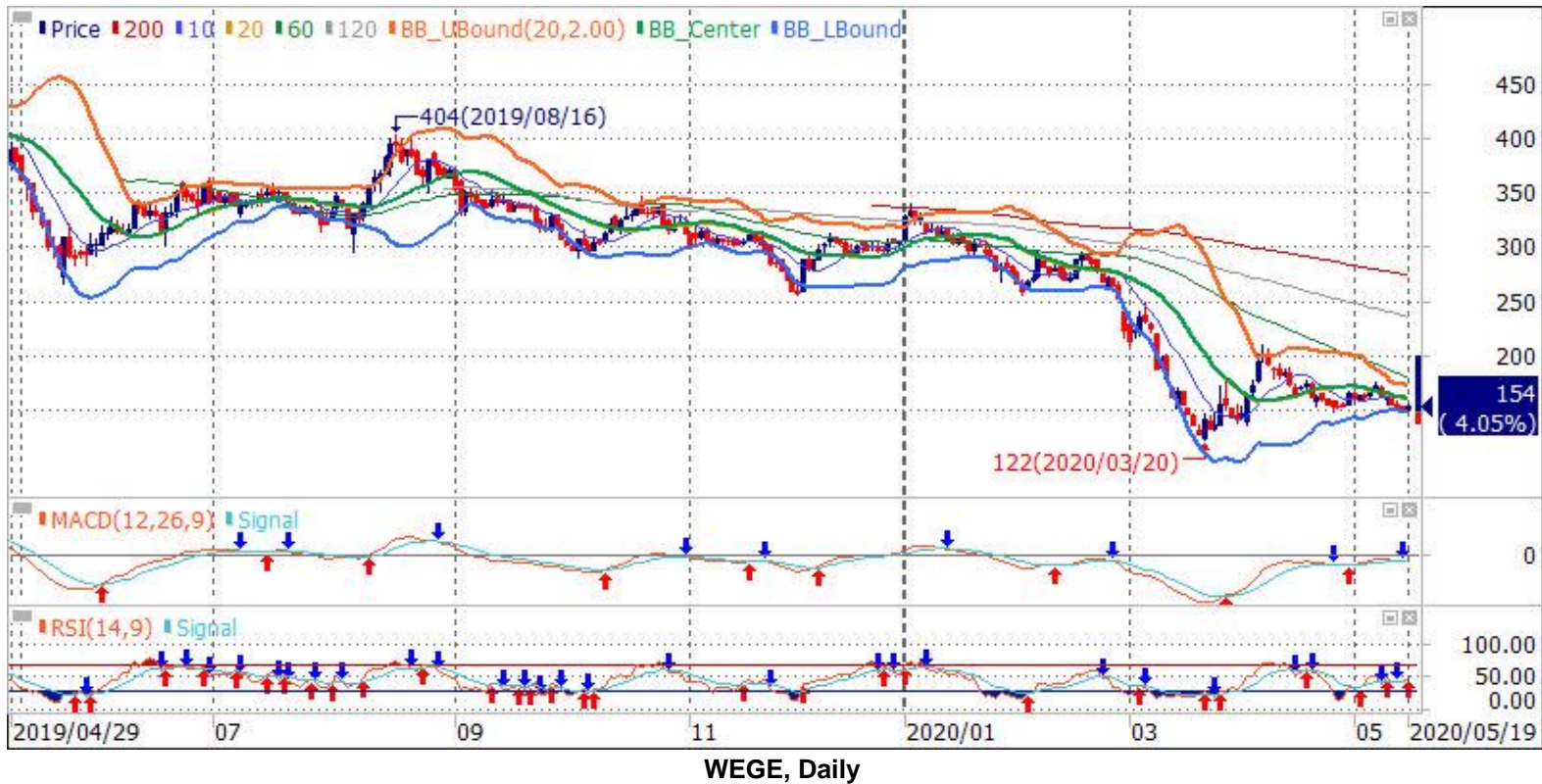
Long term target price(s) (3 months - 1 year): -

Indicator:	Status:
MACD (12;26;9)	Buy
RSI (14)	Buy

PT. Wijaya Karya Bangunan Gedung Tbk. (WEGE) 154

RoE: 18.36%; PER: 3.27x; EPS: 47.05; PBV: 0.60x; Beta: N/A

Recommendation: BUY



Commentary: WEGE stock chart rose at level 154 during the end of trading session on 19 May 2020. The price is above the lower band of the bollinger and a morning star candlestick pattern is detected signifying buying stimulus.

“Accumulative Buy” around level 150 – 154 area, with target prices at level 158, 180, 202 and 224.

Komentar: WEGE ditutup menguat di level 154 pada 19 Mei 2020. Pergerakan harga masih bertahan di atas garis bawah dari bollinger dan terlihat pola morning star candlestick pattern yang mengindikasikan adanya potensi stimulus beli. **“Akumulasi Beli”** pada area level 150 – 154, dengan target harga secara bertahap di level 158, 180, 202 dan 224.

Support: 146 & 136.

Short term target price(s) (1 day - 3 weeks): 158.

Mid term target price(s) (3 weeks - 3 months): 180 & 202.

Long term target price(s) (3 months - 1 year): 224.

Indicator:	Status:
MACD (12;26;9)	Neutral
RSI (14)	Buy

**Analisa di atas dapat berubah dan akan dianalisa kembali (update) jika terjadi perubahan mendasar dari faktor teknis analisis.*

**The analysis above may change and will be updated whenever there is a fundamental change from the technical analysis factor.*

STOCK RECOMMENDATION UPDATES

Stock	Date	Buy Area	Target Profit	Protection	Status
AALI	29/4/2020	5700 – 6000	6225, 6775 and 7350	Switch to 6225	Hold/ Maintain Buy
ADRO	18/5/2020	900 – 930	960 and 1210	Switch to 960	Hold/ Maintain Buy
AKRA	19/5/2020	2130 – 2240	2320, 2630 and 2940	Switch to 2320	Hold/ Maintain Buy
ANTM	8/5/2020	490 – 500	555 and 760	Switch to 555	Hold/ Maintain Buy
APLN	5/5/2020	100 – 102	111, 116, 120 and 135	93	Hold/ Maintain Buy
ASII	5/5/2020	3600 – 3620	4000, 4450, 4760 and 6100	Switch to 4000	Hold/ Maintain Buy
AUTO	7/4/2020	780 – 840	885, 980, 1055, 1105 and 1325	715	Hold/ Maintain Buy
BEEF	18/5/2020	204 - 210	232, 252, 266 and 326	176	Hold/ Maintain Buy
BJTM	31/3/2020	408 – 438	478, 505, 525, 540 and 600	Switch to 540	Hold/ Maintain Buy
BSDE	11/5/2020	660 – 670	760, 835, 890 and 1120	550	Hold/ Maintain Buy
DOID	30/4/2020	125 - 129	133, 139, 146, 163 and 180	Switch to 134	Hold/ Maintain Buy
CPIN	8/5/2020	4200 – 4300	4580, 4770, 4910 and 5500	Switch to 4910	Hold/ Maintain Buy
CTRA	5/5/2020	505 – 515	585, 640 and 870	405	Hold/ Maintain Buy
ELSA	14/5/2020	196 – 200	212, 228 and 290	164	Hold/ Maintain Buy
ERAA	18/5/2020	1075 – 1100	1125, 1155, 1260, 1370 and 1475	Switch to 1155	Hold/ Maintain Buy
EXCL	13/5/2020	2220 - 2290	2340, 2580, 2820 and 3050	Switch to 2340	Hold/ Maintain Buy
GGRM	28/4/2020	42500 - 43500	44575, 48700 and 66125	Switch to 48700	Hold/ Maintain Buy
GIAA	15/5/2020	210 – 230	250, 264, 274 dan 320	196	Hold/ Maintain Buy
GMFI	19/5/2020	74 - 76	78, 87, 96 dan 105	Switch to 79	Hold/ Maintain Buy
HMSP	5/5/2020	1490 – 1520	1660, 1820, 2190 and 2550	Switch to 1820	Hold/ Maintain Buy
HOKI	18/5/2020	645 – 670	685, 720, 750, 770 and 850	Switch to 685	Hold/ Maintain Buy
ICBP	19/5/2020	9600 – 9725	9850, 10050, 10175 and 10750	Switch to 9850	Hold/ Maintain Buy
IPCC	24/3/2020	224 – 234	404, 530, 620 and 1000	61	Hold/ Maintain Buy
IMAS	7/4/2020	450 - 550	640, 710, 760 and 970	390	Hold

STOCK RECOMMENDATION UPDATES

Stock	Date	Buy Area	Target Profit	Protection	Status
INDF	28/4/2020	6200 – 6300	6400, 6675, 6750 and 7275	Switch to 6750	Hold/ Maintain Buy
INTP	29/4/2020	10400 – 10600	11725, 12925, 13850, 14525 and 17300	9600	Hold/ Maintain Buy
ISAT	13/5/2020	1990 – 2010	2080, 2320, 2880 and 3450	1890	Hold/ Maintain Buy
ITMG	15/5/2020	7500 – 7550	7850, 8275 and 10050	7250	Hold/ Maintain Buy
JPFA	27/4/2020	865 – 895	970, 1065, 1140, 1190 and 1415	Switch to 970	Hold/ Maintain Buy
KLBF	30/3/2020	970 – 1010	1045, 1070, 1090 and 1175	Switch to 1175	Take Profit at Market Price
LPCK	19/5/2020	610 – 620	655, 730, 905 and 1080	Switch to 655	Hold/ Maintain Buy
LPKR	11/5/2020	140 - 145	151, 166, 179, 187 and 224	133	Hold/ Maintain Buy
LSIP	24/4/2020	615 – 645	695, 755 and 1000	Switch to 755	Hold/ Maintain Buy
MAIN	11/5/2020	530 – 550	585, 640, 685 and 855	Switch to 585	Hold/ Maintain Buy
MAPI	15/4/2020	520 - 530	575, 640, 690, 730 and 880	Switch to 730	Hold/ Maintain Buy
MYOR	3/4/2020	1710 - 1810	1895, 1975, 2030 and 2270	Switch to 2270	Take Profit at Market Price
PGAS	15/5/2020	800 – 820	845, 880, 920, 1015 and 1110	755	Hold/ Maintain Buy
PNLF	15/1/2020	276 - 280	284, 306, 330 and 352	Switch to 284	Hold
PTBA	15/5/2020	1855 – 1865	1905, 1945, 2120, 2300 and 2470	Switch to 1905	Hold/ Maintain Buy
SCMA	6/5/2020	760 – 790	825, 885 and 1130	Switch to 825	Hold/ Maintain Buy
SMGR	16/4/2020	6950 – 7150	7650, 8275, 8775, 9125 and 10575	Switch to 8775	Hold/ Maintain Buy
SMRA	20/3/2020	490 – 494	610, 680, 730 and 935	362	Hold/ Maintain Buy
SRIL	19/5/2020	145 – 147	149, 157, 163, 178 and 192	134	Hold/ Maintain Buy

STOCK RECOMMENDATION UPDATES

Stock	Date	Buy Area	Target Profit	Protection	Status
TBIG	30/3/2020	825 – 875	920, 955, 975 and 1070	Switch to 975	Take Profit at Market Price
TLKM	18/5/2020	3020 – 3100	3120, 3190, 3250, 3500, 3750 and 4000	Switch to 3250	Hold/ Maintain Buy
TOWR	30/3/2020	670 – 680	710, 725, 735 and 775	Switch to 775	Take Profit at Market Price
UNTR	19/5/2020	13550 – 14150	14625, 15425, 18850, 22275 and 25700	Switch to 14625	Hold/ Maintain Buy
UNVR	22/4/2020	6800 - 7000	7200, 7725, 8950 dan 10175	Switch to 7725	Hold/ Maintain Buy
WIKA	24/3/2020	750 - 775	955, 1100, 1205 and 1635	Switch to 1205	Hold/ Maintain Buy
WSBP	7/4/2020	143 – 173	200, 230, 250 and 336	121	Hold/ Maintain Buy
WSKT	7/4/2020	515 - 635	775, 910, 1010 and 1415	410	Hold/ Maintain Buy

Indicators

- *MACD (Moving Average Convergence Divergence)*: momentum indicator.
- *RSI (Relative Strength Index)*: compares the magnitude of recent gains to recent losses in attempt to determine 'overbought' and 'oversold' conditions of the asset.
- *Stochastic*: technical momentum indicator that compares a currency pair's closing price to its price range over a given time period.

RESEARCH TEAM **(62-21) 520-6678 ext. 610 / 612**

Disclaimer: *PT Binaartha Sekuritas has compiled this report in good faith, using information believed to be reliable. PT Binaartha Sekuritas and its analyst take no responsibility for the accuracy of the information contained in this report. This report has been produced for distribution to clients of PT Binaartha Sekuritas only. This report is not an invitation to buy or sell any security. PT Binaartha Sekuritas may have used the information in this report prior to publication. The company or its clients may have positions in or may from time to time buy or sell the securities mentioned in this report or other related securities.*